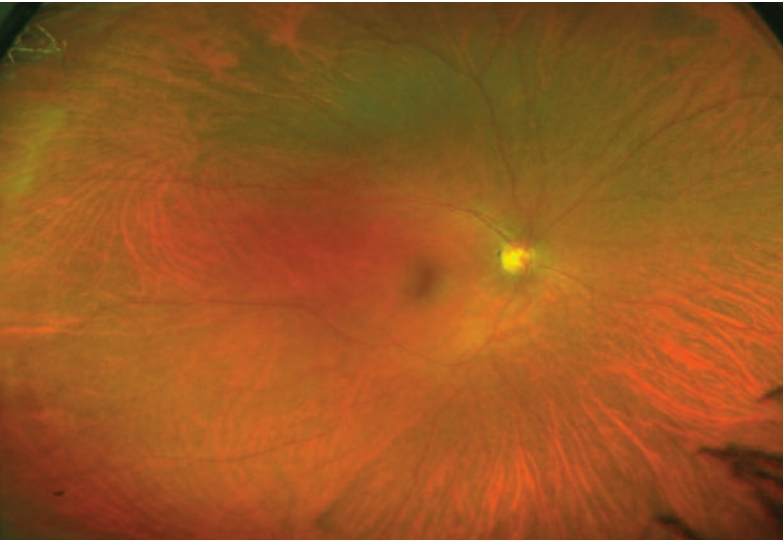
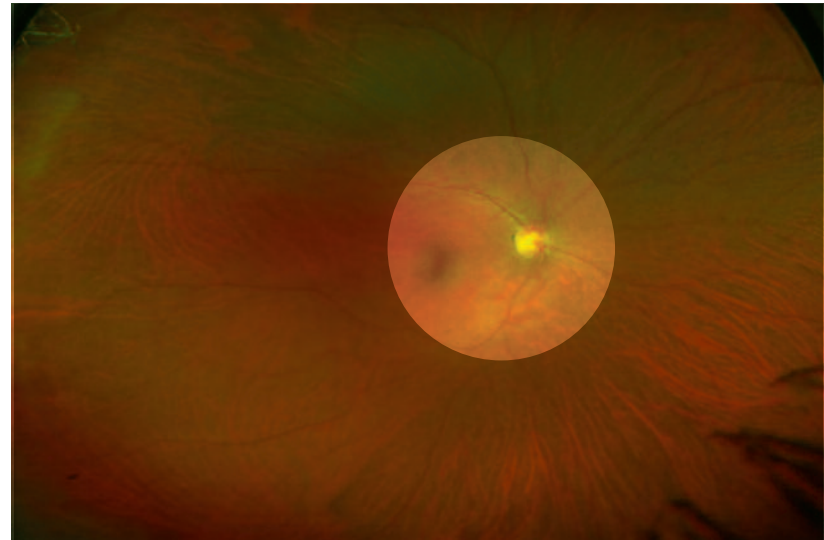


# Comparison of Fields of View

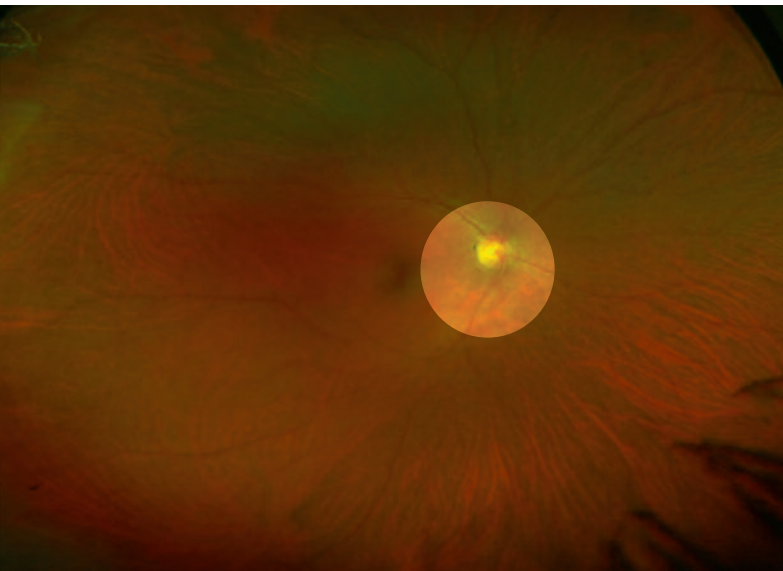
An **optomap** retinal image compared to conventional devices in a single capture.



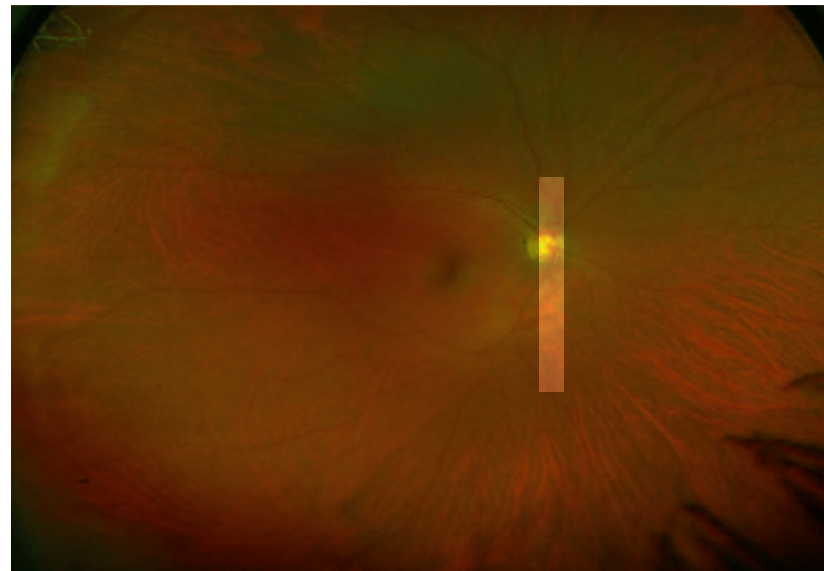
**optomap**® Retinal image  
(200°)



Fundus Camera  
(about 45°)



Indirect Ophthalmoscope  
(about 30°)



Slit Lamp  
(with 90° diopter Lens)

Optos, Inc.  
67 Forest Street  
Marlborough, MA 01752  
USA

866.OPTOMAP (678.6627)

©2013 Optos. All rights reserved. Optos and **optomap** are registered of Optos plc. P/N 492001

 **optomap**®  
ultra-wide digital retinal imaging

[optomap.com](http://optomap.com)