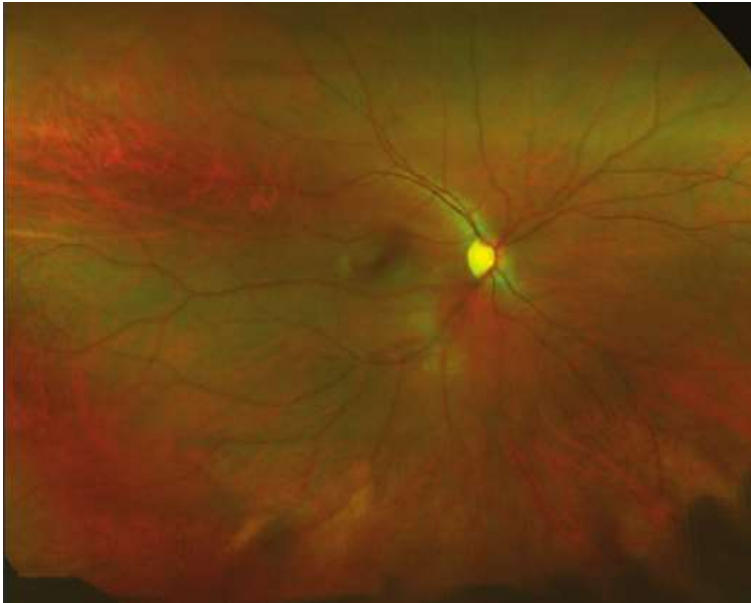
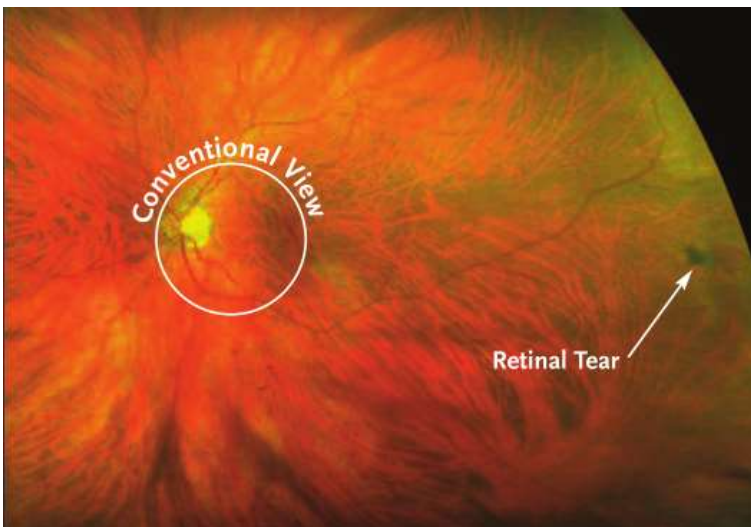


Check and maintain the health of your eyes with our new advanced method.



An optomap image of a healthy retina



An optomap image of a retinal tear

Dr. Zadeh recommends the optomap[®] Retinal Exam as an integral part of your annual eye exam. An optomap provides a view of appropriately 82% of your retina in a single capture, assisting in the evaluation of your visual health.

Benefits of an optomap[®] Retinal Exam:

- **Dilation is not necessary** in order to evaluate your retinal health, for many patients. This test is a wellness screening, however, and does not replace a dilated fundus exam if needed.
- It takes only minutes to perform; **is fast, painless and comfortable.**
- **A side by side comparison will show even subtle changes** each year during your comprehensive exam.
- The doctor is able to interactively review and discuss your **retinal health results at the time of your exam.**
- **Earlier detection helps prevent vision loss** and serious progression of eye disease.
- **Many eye diseases and health conditions are silent.** The optomap can detect many diseases, including: macular degeneration, glaucoma, retinal tears or detachments, diabetes, and high blood pressure.
- **This valuable exam is available for \$45.** Discounts may be available through health plans; this screening is not billable to insurance.

At Family Eyecare of Roswell, we are committed to offering our patients the highest standard of care available today.

Dr. Zadeh strongly recommends the optomap[®] Retinal Exam once per year because of the invaluable information that is used to help evaluate the health of your eyes. **As an essential part of your comprehensive exam, we offer this screening for \$45.**